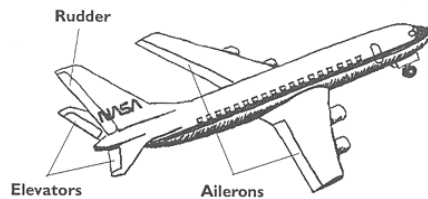


This Joystick configuration tool is only needed and useful when you got problems with the throttle in the Airbus X and aileron, rudder and elevator on the Huey X. **If you do NOT have these problems do not use this tool.**

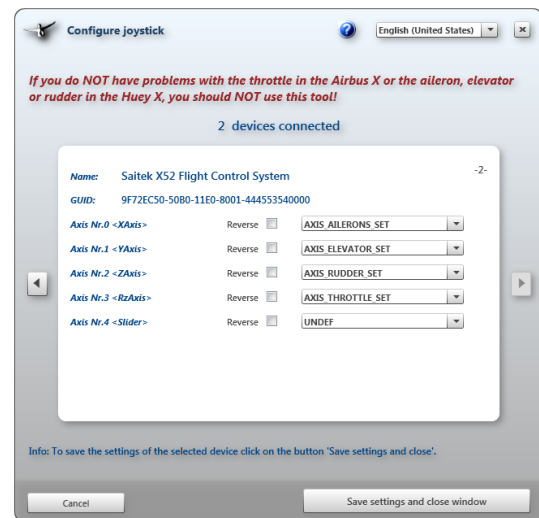
This tool is created because some users have problems because the Airbus X and Huey X intercept some axis to manipulate how FSX interprets them. This allows us to fix problems and avoid limitations in FSX.



When you open the joystick configuration tool it will detect all the controllers that can be detected (these could be more than you expected) and it will show how the axis are called that the controller provides. Unfortunately their names can be a bit cryptic and there is not a lot that can be done about that.

Now you can select the device and the joystick axis you want to use. Then link it to the control axis in FSX, you can use some axis from one device and some axis from others. Normally we would expect this to be a standard setup:

- Xaxis ⇨ Ailerons
- Yaxis ⇨ Elevator
- Zaxis ⇨ Rudder
- RzAxis ⇨ Throttle



If you got a dual throttle system you can select AXIS\_THROTTLE1\_SET and AXIS\_THROTTLE2\_SET. If you only have one throttle axis use AXIS\_THROTTLE\_SET. Axis you do want to use should be set to UNDEF(ined). Click Save and close.

Again we like to make clear that this will ONLY affect the throttle channel in the Airbus X and only the aileron, rudder and elevator in the Huey X. If you do not have issues with any of them do not use this tool!